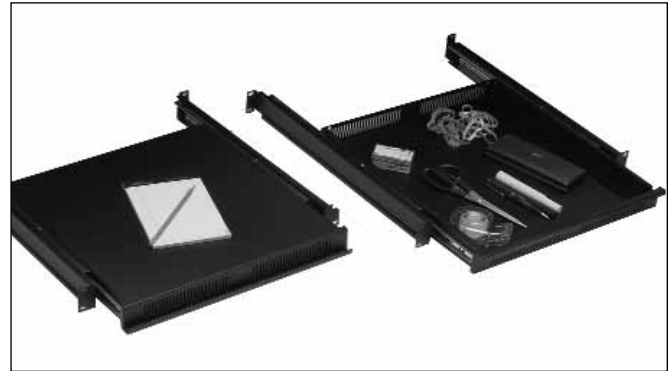


### Features

- Pull-out writing surface/shelf with integral pen trough may also be rotated or inverted 180° to become a 1RU storage drawer.
- Fabricated of certified 16 gauge US Steel.
- Supports up to 80 lbs.
- Provides depth adjustment from 18" - 33" for 19"W racks and cabinets.
- Mounts to front and rear mounting rails.
- Fully vented front and rear chassis won't trap heat when used as a writing surface.
- Finished in durable black powder epoxy paint.



**LWS-116**  
2-in1 Sliding Writing Surface and Shelf.

### Description

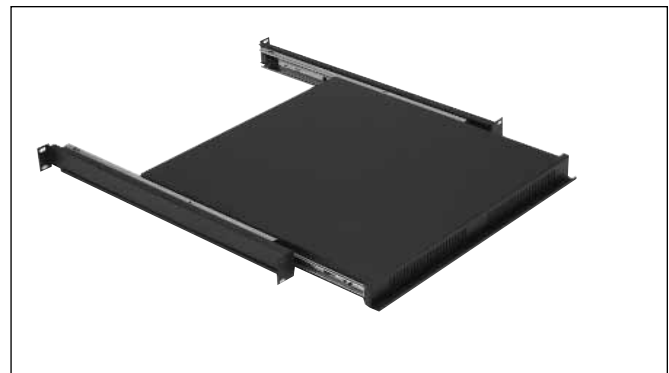
Dual purpose writing surface/shelf and drawer make this assembly a great stocking item to meet customer needs. Lowell's versatile Model LWS-116 may be used as a writing surface/shelf or drawer in 19"W racks. As a writing surface/shelf, the unit provides sturdy support for up to 80lbs of non-rackmount equipment such as consumer electronics, laptops, power supplies, and chassis-style components of all types. The writing surface/shelf also features an integral handle that may be used as a pen trough. Model LWS-116 may also be inverted 180° and installed as a drawer to provide ample storage space with 1.58" useable height for office supplies and electronics accessories.

The 1RU accessory mounts to front and rear mounting rails and has infinite expansion from 18"D to 33"D for trouble free positioning and installation to rear cabinet rails. Additional full length or short mounting rails may be ordered separately to meet application needs.

Model LWS-116 shelf is precision formed from 16-gauge steel with vents front and rear. The assembly is finished in smooth black powder epoxy and ships assembled ready to install.

### A & E Specifications

The writing surface/shelf or drawer for 19"W rackmount use shall be Lowell Model LWS-116 with adjustable depth of 18" - 33". Shelf shall have a panel space height of 1RU. It shall mount to front and rear rails in cabinets that are 19" - 36"D. Load capacity shall be up to 80 lbs. The shelf assembly shall be formed from 16 gauge US steel and be finished in black powder epoxy.



**LWS-116**  
Shown as a writing surface / shelf.



**LWS-116**  
Shown as a drawer.

#### 19"W WRITING SURFACE OR SHELF SPECIFICATIONS

Model	Description	Panel Space (Inches)	Panel Space (Rack Units)	Depth	Writing Surface Width	Drawer Width (Usable)	Weight	Load Rating	Mounts Model Series
<b>LWS-116</b>	Writing surface or drawer 2-in-1	1.75"	1RU	18" - 33"	15.5"	17.359"	16 lbs.	80 lbs	L279, L278, L277, L275* L268, L267*, L265*, L262*, L260*, L259*, L258*

\*Models indicated require additional full length or short rails (L212 Series - order separately) for rear support of the LWS-116. Other models listed include front and rear rails.



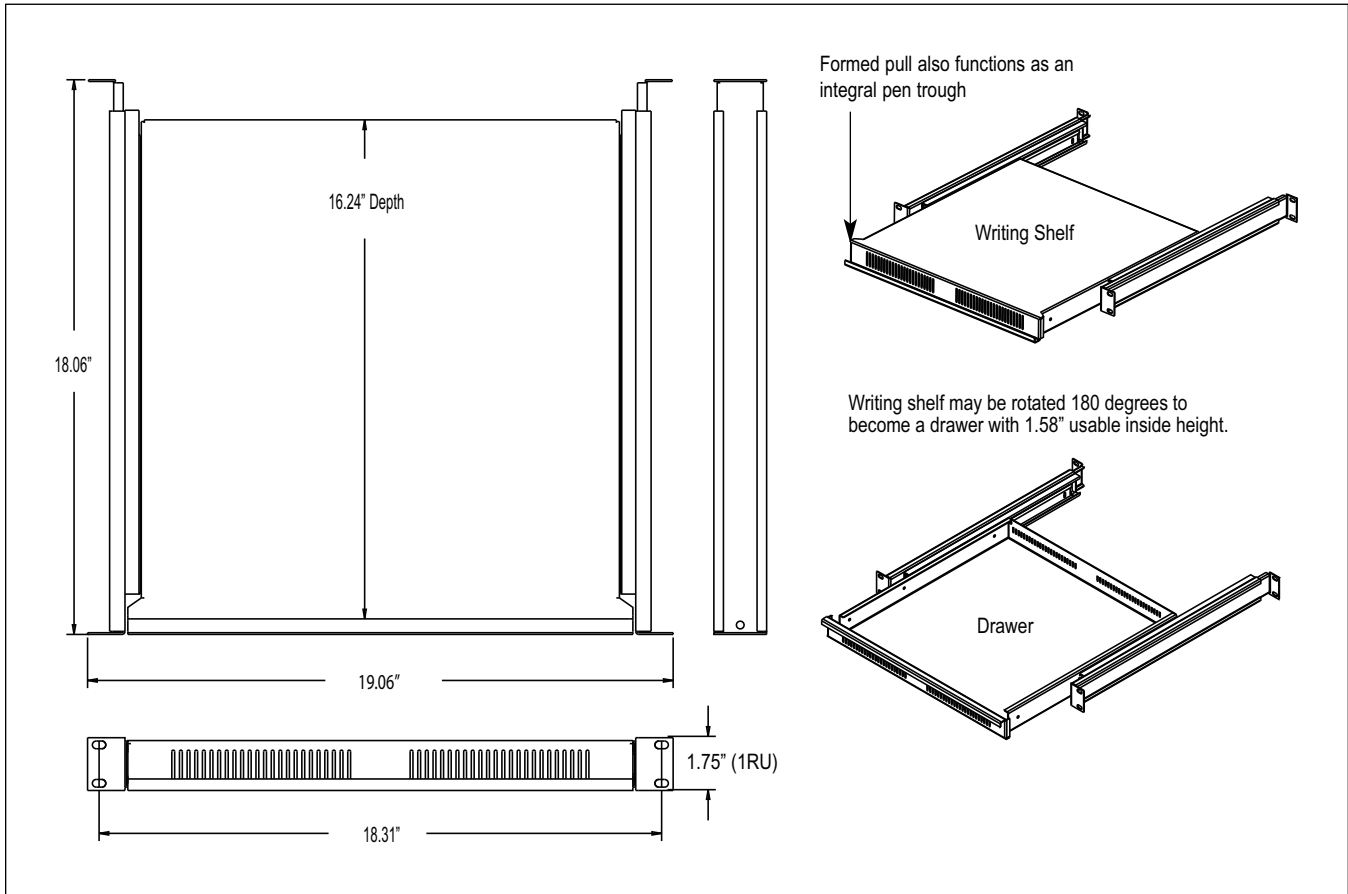
Open Frame Floor

Solid Side Floor & Desk

Wallmount Surface & Recessed

Panels & Accessories

Thermal & Wire Mngmt



LWS-116 Dimensions



Rear View

Rear supports simply slide into position and secure to rear rails.\* Supports provide infinite extension from 18"D to 33"D.

\*Model LWS-116 requires rear rail support. Order extra L212 Series rails if needed (see below).

**Accessories** (order separately)



**L212 Series Mounting Rails**

New printed & reversible design with tapped 10-32 & square-punched holes. (order separately - if required to provide rear rail support).

Model	Description	Pkg Qty
<b>Mounting Rails</b>		
L212-12*	Adj. 2-side Mtg. Rails tapped 10-32 & punch 12-24 for 12PS 7RU	1 Pair
L212-17*	Adj. 2-side Mtg. Rails tapped 10-32 & punch 12-24 for 17PS 10RU	1 Pair
L212-21*	Adj. 2-side Mtg. Rails tapped 10-32 & punch 12-24 for 21PS 12RU	1 Pair
L212-28*	Adj. 2-side Mtg. Rails tapped 10-32 & punch 12-24 for 28PS 16RU	1 Pair
L212-36*	Adj. 2-side Mtg. Rails tapped 10-32 & punch 12-24 for 36PS 21RU	1 Pair
L212-42*	Adj. 2-side Mtg. Rails tapped 10-32 & punch 12-24 for 42PS 24RU	1 Pair
L212-61*	Adj. 2-side Mtg. Rails tapped 10-32 & punch 12-24 for 61PS 35RU	1 Pair
L212-70*	Adj. 2-side Mtg. Rails tapped 10-32 & punch 12-24 for 70PS 40RU	1 Pair
L212-77*	Adj. 2-side Mtg. Rails tapped 10-32 & punch 12-24 for 77PS 44RU	1 Pair

\*Note: Additional full length or short set of L212 Series rails is required for rear support of the LWS-116 shelf in Cabinet Series L267, L262 and L259.

19W Shelves - Writing