

**ISP-2H**

2-gang plate punched for 3-inch speaker and 1 pushbutton.  
(order speaker and pushbutton separately)

## Quality Features

- Wall plates and component accessories provide a low cost method of building intercom speaker stations.
- Stainless steel wall plates are pre-punched for field installation of a 3" speaker and optional pushbutton switches.
- Wall plates are punched to mount standard 2-gang E.O. Boxes or to Lowell's surface box Model P1X-2.

## Description

Stainless steel wall plate Series ISP is punched for mounting a 3" speaker and optional pushbutton switches for custom assembly of an intercom speaker station. Economical method of building an intercom speaker station is ideal for custom applications and where low purchase costs are important considerations. *Ready to install intercom speaker stations utilizing the same components are available by ordering the ISX Series from Lowell. ISX Series are ideal for applications where reduced labor costs are important.*

ISP Series wall plates are offered in three styles for 2-gang use. Choose models punched to mount a speaker only in the center of the plate, or choose models punched off center to mount the speaker and one or two pushbutton switches.

Stainless steel plates have countersunk mounting holes and include 6-32 oval-head screws for installation to standard E.O. Boxes or Lowell's surface box Model P1X-2. All components are ordered separately.

Component Accessories include Lowell's 3" intercom speaker Model 3SC45 with 2-watt power rating and 45-ohm impedance. For distributed applications, Lowell's 45-ohm intercom transformer Model TLM2545 is available for 25V applications and Model TLM7045 may be ordered for 70V use. Flush mounting momentary pushbutton switches (SPDT) are also available; choose Model S-12B with black button or S-12R with red button. See page 2 for additional component information.

## A & E Specifications

Wall plate(s) for intercom speaker use shall be Lowell Model ISP-\_\_\_\_\_. The plate shall be 2-gang stainless steel and shall be punched to accept a 3" speaker. It shall have \_\_\_\_\_ (zero, one, two) holes size .469" for mounting SPDT momentary pushbutton switch(es). It shall have countersunk holes to mount to a standard electrical box or to Lowell surface mount box Model P1X-2. Wall plate(s) shall include 6-32 mounting screws.

### ISP SERIES INTERCOM WALL PLATES AND ACCESSORY COMPONENTS

Wall Plate Model	Plate Size	Pushbutton Opening Quantity	Optional 3", 45ohm Speaker (order separately-see p.2)	Optional 45ohm Transformer (order separately-see p.2)	Optional Pushbutton (order separately-see p.2)	Optional Surface Enclosure (order separately-see p.2)
<b>ISP-2</b>	2-gang	0 **	<b>3SC45</b>	<b>TLM2545 or TLM7045</b>	<b>S-12B or S-12R</b>	<b>P1X-2</b>
<b>ISP-2H</b>	2-gang	1	<b>3SC45</b>	<b>TLM2545 or TLM7045</b>	<b>S-12B or S-12R</b>	<b>P1X-2</b>
<b>ISP-2H2</b>	2-gang	2	<b>3SC45</b>	<b>TLM2545 or TLM7045</b>	<b>S-12B or S-12R</b>	<b>P1X-2</b>

\*\* Model without pushbutton (ISP-2) is punched for mounting a 3" speaker in the center of the plate; models with pushbutton openings are punched for off-center speaker mounting.



## ISP Series

### Wall Plates & Components for Custom-Built Intercom Speaker Systems

#### Component Accessories for Building an Intercom Station Using Wall Plate Series ISP (order separately)

##### Optional 3" speaker for use with Lowell ISP Series wall plates

Model	Speaker Size	Power Rating	Type	Ceramic Magnet	Frequency Response	Dispersion 2000Hz -6dB	SPL 1W / 1M	Impedance	Depth (w/o xfmr)
<b>3SC45</b>	3"	2W	Cone driver	2.35oz.	200Hz - 12kHz	170°	97dB Peak	45 ohms	1.25"

##### Optional transformers for use with Lowell ISP Series wall plates

Model	Xfmr Primary Voltage	Power Rating	Primary Taps	Secondary Impedance	Core Size	Insertion Loss	Frequency Response	Size H x W x D
<b>TLM7045</b>	70V	1W	1, .5W	45 Ohms	.375" x .375"	1.5dB	150Hz-9kHz ±1dB	1.186" x 2.062" x 1.125"
<b>TLM2545</b>	25V	1W	1, .5W	45 Ohms	.375" x .375"	1.5dB	150Hz-9kHz ±1dB	1.186" x 2.062" x 1.125"

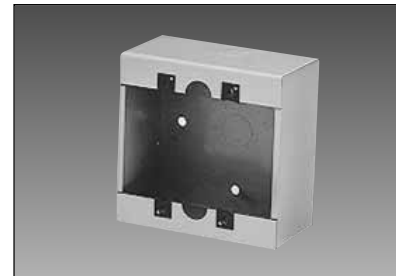
##### Optional SPDT switches for use with Lowell ISP Series wall plates

Model	Switch Type	Closure Type	Current Draw	Flush Button	Fits Hole Size
<b>S-12B</b>	SPDT	Momentary	.25A	Black	.469"
<b>S-12R</b>	SPDT	Momentary	.25A	Red	.469"

#### Mounting Accessories for Wall Plate Series ISP (order separately)

P1X-2 Series Surface Box is ideal for mounting a variety of gang size devices including ISP Series wall plates and ISX Series intercom stations. Construction is 20-gauge steel with a white powder epoxy finish. Front flanged holes conform to standard wall plate centers and hardware. Knockouts (.5") are provided in the rear and on the sides for wire/conduit entry.

Model	Size	Dimensions	Knockouts	Color
<b>P1X-2</b>	2-gang	4.625"W x 4.625"H x 2.5"D	(5) 1/2"	White



P1X-2

Tamper-resistant screws and screwdriver tip are available for applications that require vandal protection. See chart below. *ISP Series wall plates and ISX Series intercom station assemblies ship with standard oval head 6-32 hardware.*

Model	Description	Quantity
<b>TP06321P</b>	Tamper resistant spanner screw 6-32 x .75	1
<b>HRP632</b>	Hdwr screwdriver and tip for 6-32 spanner screws	1

AUDIO

**12"/10"**  
Speakers & Accessories

**8"**  
Speakers & Accessories

**6"**  
Speakers & Accessories

**4"**  
Speakers & Accessories

**Horn**  
Speakers & Accessories

**Masking**  
Speakers & Generators

  
**Control**  
Accessories & Electronics

Intercom Accessories