

Features

- Formed construction is lightweight with rigid support.
- Mounts Lowell Unihorn™ Model LUH-15T when used without a grille or with the horn system's perforated press fit grille or optional LUH-VRG vandal-resistant grille.

Description

Lowell tile bridge Model LUH-TBAR is engineered to distribute the Unihorn™ assembly weight (6 lbs) to the ceiling support system when installed in a suspended 2' x 2' or 2' x 4' tile ceiling system. Tile bridges are often required, for safety reasons, by local building codes, and for aesthetics to reduce the potential of unsightly ceiling tile sag.

Model LUH-TBAR tile bridge is designed specifically to mount Lowell Unihorn™ Model LUH-15T. The horn installs to the tile bridge using screwdriver adjustable clamps (dogs). The horn may be used without a grille, with the horn system's press fit perforated grille or with optional vandal-resistant screw mount grille Model LUH-VRG.

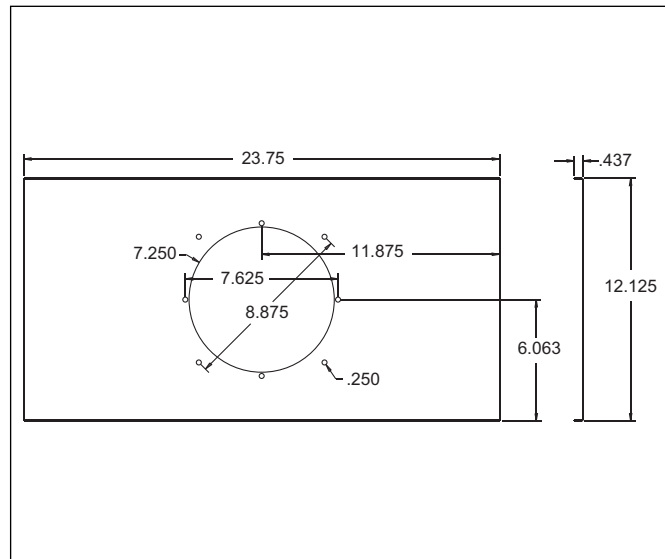
Model LUH-TBAR is galvanized 20-gauge US steel size 23.75"L x 12.125"W with a round center opening size 8.875" Dia.

A & E Specifications

Tile bridge shall be Lowell Model LUH-TBAR. It shall be formed from 20-gauge galvanized steel and be engineered to support and distribute the weight of Lowell Unihorn™ LUH-15T assembly to the ceiling support system in a 2' x 2' or 2' x 4' suspended ceiling installation.



Tile bridge Model LUH-TBAR



LUH-TBAR dimensions

TILE BRIDGE SPECIFICATIONS

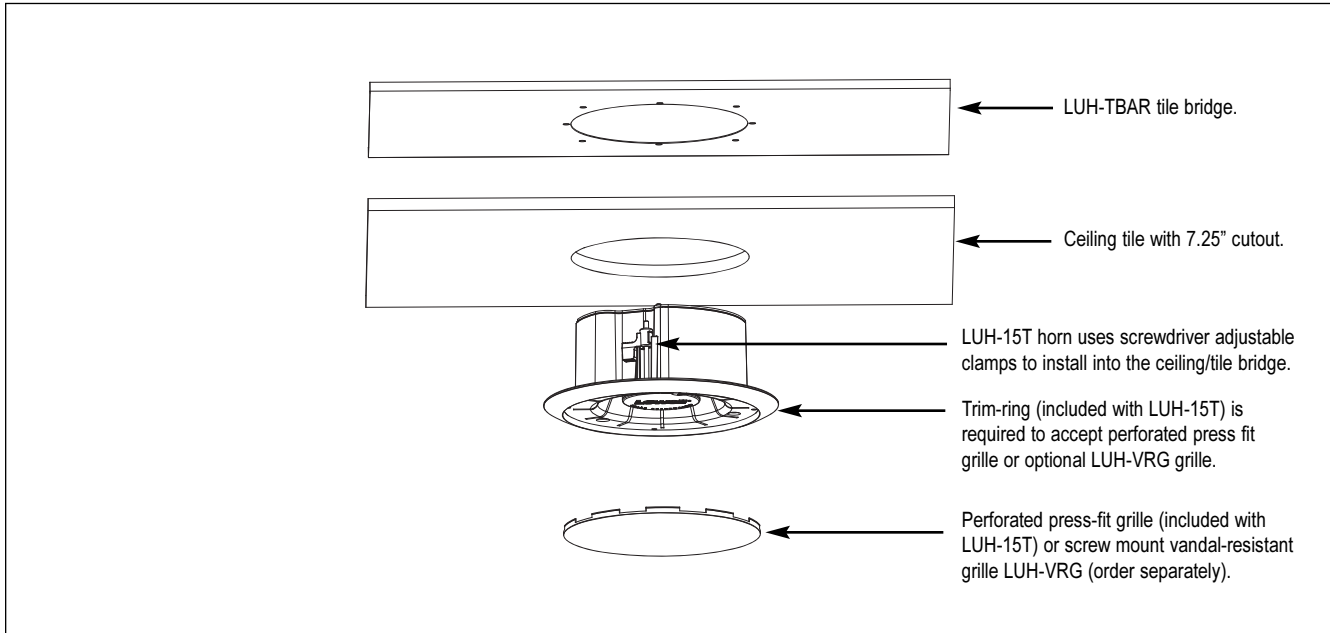
Model	Mounts Horn	Material	Outside Dimensions	Opening Size
LUH-TBAR	Unihorn™ LUH-15T	Galvanized 20-gauge US Steel	23.75"L x 12.125"W	8.875" Dia.



LUH-TBAR

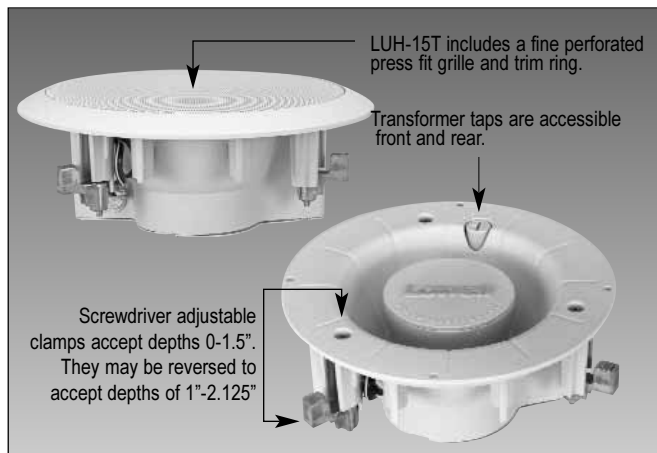
Tile Bridge for Unihorn™ LUH-15T

Installation

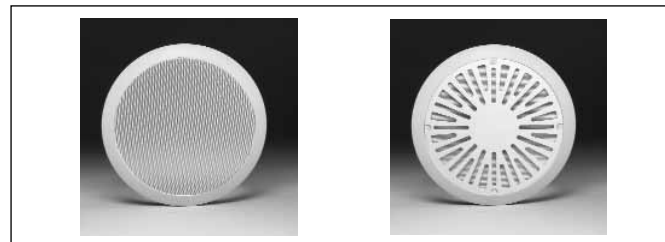


LUH-TBAR Installation (Typical)

Companion Accessories (order separately)



UNIORN™ LUH-15T - 15W 70/25V Package
Includes perforated grille and trim ring.



Trim Ring / Perforated Grille
included with LUH-15T
(9.6" Dia., Aluminum)

Optional Vandal-resistant Grille
LUH-VRG
Cast aluminum with stainless steel screen
(Shown with trim ring supplied with LUH-15T)

Model	Description
LUH-15T	15W Unihorn 3.72"D + trim ring and grille
LUH-VRG*	Vandal-resistant grille for LUH-15T

*Optional grille replaces the perf grille included with LUH-15T.

A
U
D
I
O

12"/10"
Speakers & Accessories

8"
Speakers & Accessories

6"
Speakers & Accessories

4"
Speakers & Accessories



Masking
Speakers & Generators

Control
Accessories & Electronics

T-Bridges