

Feature Details

- Ships completely assembled and ready to install.
- Choice of 8" or 4" driver with 15W power rating.
- Systems include the driver in an acoustic-lined 700 cu.in. backbox with perforated grille and externally accessible leads mounted to a tray with formed flanges that hook-over the T-bar grid.
- Available with optional rotary switch for knob adjustment of 70V transformer taps or optional 50-ohm potentiometer for volume level adjustment of the speaker.

Description

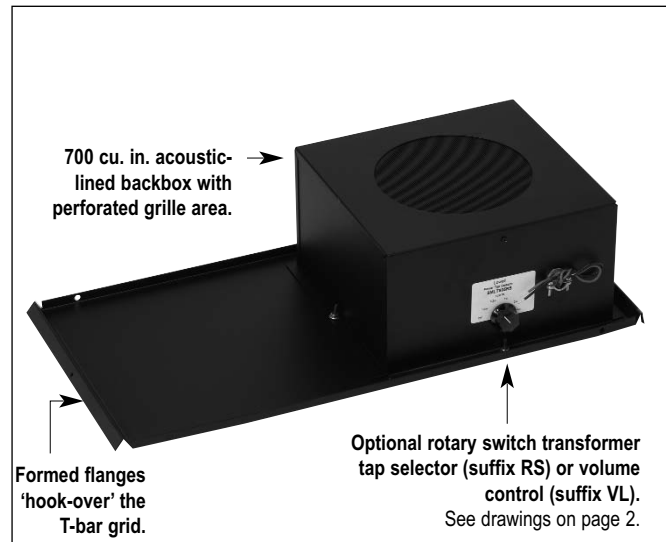
In general, the purpose of a sound masking system is to provide greater conversational privacy and productivity in an open-office environment by adding noise and shaping the signal to mask speech. The noise signal is fed from a noise generator with a built-in or separate amplifier to sound masking speakers that are positioned out-of-view above the ceiling tiles.

To meet a broad range of application requirements, Lowell manufactures a variety of sound masking speaker assemblies and noise generators. For additional information on masking speakers refer to Series SM601 (12W), SM802 (15W), SM803 (20W), and SM810 (15W). For information on masking generators refer to Series SMG-1 noise generators or Series SMGA20 (20W) or SMGA5 (5W) noise generator/amplifiers.

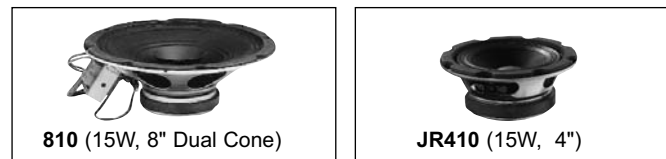
Series SMLT Grid Mount™ masking assemblies offer labor savings and are ideal for applications where suspended ceiling-to-deck space is limited. The 700 cu.in. backbox is 6"H and is mounted to a tray that 'hooks-over / hangs-on' to the 24" centers of the T-Bar grid. This allows the system to be installed cost efficiently and out-of-sight, above the ceiling tile.

All models are shipped assembled for fast installation in T-bar style 2' x 2' or 2' x 4' ceiling applications. Selection includes a choice of two speaker drivers with a factory wired 70V-5W transformer mounted within an acoustic-lined 700 cubic inch backbox with perforated grille secured to a tray that is equipped with formed flanges that are engineered to connect over the T-bar grid. Series SMLT810 includes 15W driver Model 810; Series SMLT410 includes 15W driver Model JR410. Both are economical, installer-friendly systems with externally accessible color-coded speaker leads exiting the backbox through a strain relief clamp. The backbox/tray assembly is finished in black powder epoxy.

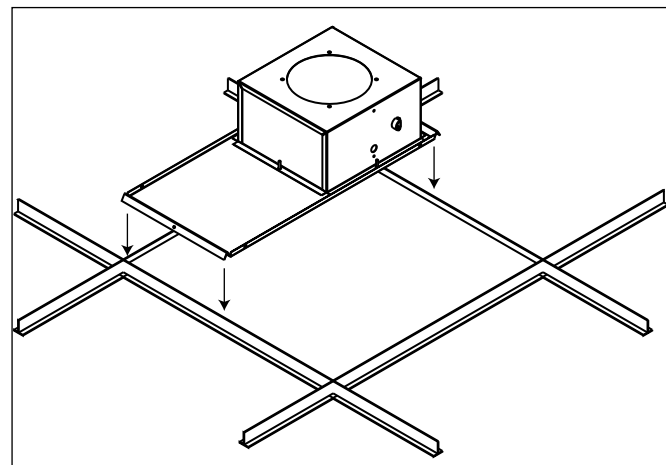
Lowell's unique Grid Mount™ tray assembly allows for fast and trouble-free installation of a masking speaker above a T-bar supported ceiling tile for upward dispersion. The tray assembly may be secured, if required, to the grid using the set screws by others.



SMLT810 and SMLT410 Series Assemblies



Assemblies Include Choice of 2 Drivers



Assemblies mount ABOVE the T-bar grid OVER the ceiling tile

Model	Driver Model	Driver Type	Power Rating	Transformer Taps	Backbox Volume	Dispersion Angle	Installed Options
SMLT810	810	8" Dual cone (10oz.)	15W	70V: 5, 2, 1, .5, .25W	700 cu.in.	Up	---
SMLT810RS	810	8" Dual cone (10oz.)	15W	70V: 5, 2, 1, .5, .25W	700 cu.in.	Up	Rotary switch
SMLT810VL	810	8" Dual cone (10oz.)	15W	70V: 5, 2, 1, .5, .25W	700 cu.in.	Up	Volume control
SMLT410	810	4" High compliance (10oz.)	15W	70V: 5, 2, 1, .5, .25W	700 cu.in.	Up	---
SMLT410RS	810	4" High compliance (10oz.)	15W	70V: 5, 2, 1, .5, .25W	700 cu.in.	Up	Rotary switch
SMLT410VL	810	4" High compliance (10oz.)	15W	70V: 5, 2, 1, .5, .25W	700 cu.in.	Up	Volume control



Options

Optional rotary switch is available as a factory installed accessory (suffix Model **RS**). The switch is an externally accessible, six position rotary with knob adjustment to provide a convenient method of changing transformer taps. Rotary switch is particularly useful as system needs expand and/or change.

Optional volume level control is available as a factory installed accessory (suffix Model **VL**). The volume control is a 50-ohm shaft-adjust potentiometer for volume level adjust-

ment to the masking speaker. The control is ideal for fine adjustment of speaker levels near bleed through areas such as light fixtures, air returns, etc.

Companion noise generators and generator/amplifiers for sound masking are also available from Lowell. For detailed information, please download the specification sheets on Series SMG-1 generators and SMGA Series Generator/amplifiers from the Lowell website.

A & E Specifications

The sound masking speaker assembly for suspended ceiling installations shall be Lowell SMLT Model _____. The assembly shall include a speaker driver with factory wired transformer mounted within a 700 cu.in. acoustic backbox with perforated grille, externally accessible speaker leads, attached to a tray with formed flanges that connect to the T-bar grid. The assembly driver shall be _____ (8" dual cone, 4" high compliance) with a power rating of 15W. The wired transformer shall be 70V with primary taps at 5, 2, 1, .5, and .25 watts. Speaker leads shall exit the backbox through a strain relief clamp. The backbox shall be welded steel with undercoating to eliminate acoustic and metallic resonance. Additionally, the backbox shall be lined with 1-1/2" thick fiber-glass with a 1-1/2 lb. per cu.ft. density to

further eliminate internal reflections. Installation to the T-bar grid ABOVE a ceiling tile shall be easily accomplished using the formed flanges on the tray. If required the tray shall be secured to the T-bar grid using the screws provided. Sound projection of the speaker assembly shall be upward.

Options:

Rotary Switch: Assembly shall include a factory mounted, six position rotary switch with a knob on the outside of the backbox for selection of transformer taps. **Volume level control:** Assembly shall include a factory mounted 50-ohm potentiometer wired to the masking speaker for level adjustment.

12"/10"
Speakers & Accessories

8"
Speakers & Accessories

6"
Speakers & Accessories

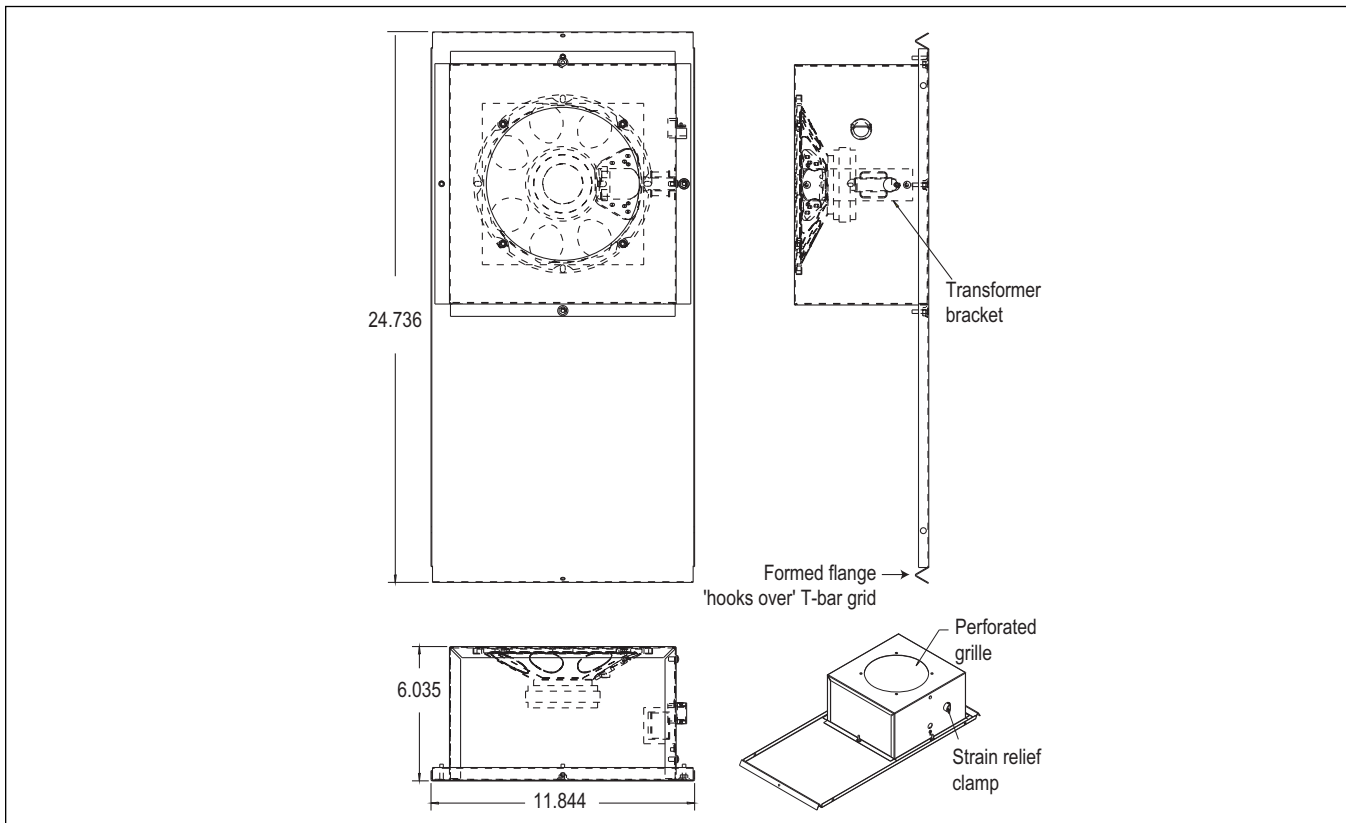
4"
Speakers & Accessories

Horn
Speakers & Accessories

Masking
Speakers & Generators

Control
Accessories & Electronics

Masking Speakers



Series SMLT810 and Series SMLT410 Dimensions