

### Quality Features

- Ready-to-install surface assemblies include a 15W dual cone speaker with transformer and square perforated grille mounted within an acoustic lined backbox.
- Attractive beveled edge grille and slope-front or square housings are finished in neutral Network Grey color to blend with any architectural decor.
- Housing features wiremold knockouts top/bottom and a universal mounting hole pattern on the rear for easy installation to 4" square/octagon or gang size boxes.

### Description

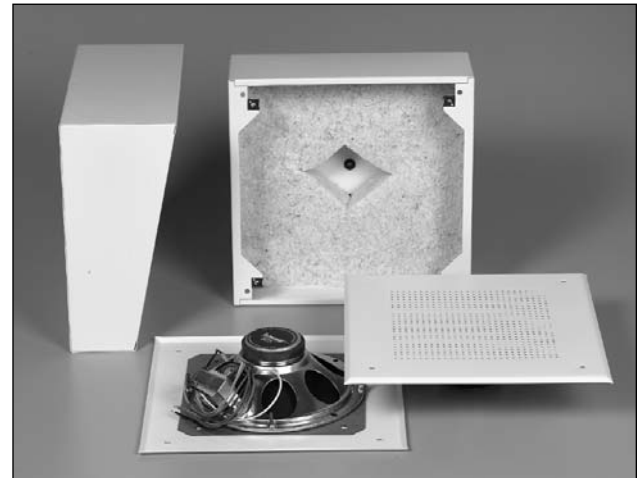
DSL and DSQ Series speaker assemblies with 8-inch driver are easy-to-install paging and background music systems for school classrooms, medical offices, and anywhere that an attractive surface-mounting speaker is required.

Slope front Model DSL810-72 and square Model DSQ810-72 include 15W dual cone driver Model 810 with a 70/25V transformer mounted to Lowell's popular SG-8 beveled edge grille. The system backboxes (slope-front and square) are steel with 1-1/2" thick acoustic batting, a universal mounting hole pattern on the rear and knockouts for 500 Series wire-mold top and bottom for trouble free installation.

Slope front Model DSL810-72 measures 11.3"H x 11.5"W x 5.25"D (top) 3"D (bottom). Square Model DSQ810-72 measures 11.3"H x 11.5"W x 4"D. The backbox and grille on both models are finished in Lowell's neutral Network Grey powder epoxy to blend well in nearly any architectural setting.

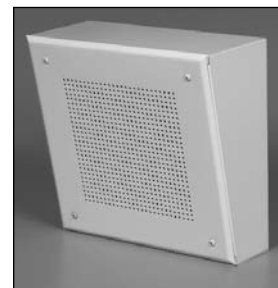
### A & E Specifications

Speaker assembly for surface mount indoor applications shall be Lowell Model \_\_\_\_\_ (DSL810-T72 or DSQ810-72). Assembly shall include a 15W dual cone driver with dual voltage transformer and square grille mounted within a steel housing (slope-front or square). The housing shall be lined with 1.5" thick acoustic batting and have wiremold knockouts top and bottom and a universal mounting hole pattern on the rear. Speaker shall have a frequency response of 47Hz - 20kHz  $\pm 6$ dB and an average sensitivity of 95dB. Transformer shall be dual voltage (70V / 25V) with power taps at 0.25, 0.5, 1, 2, and 5 watts with color coded leads. The housing and grille shall be finished in durable powder epoxy paint.



**DSL / DSQ Series (15W)**

Assemblies include a slope-front or 4"D square backbox with a factory mounted 15W speaker, transformer and grille.



**DSL810-72**

Slope front 15W assembly  
Network Grey (neutral) finish



**DSQ810-72**

Square 15W assembly  
Network Grey (neutral) finish



**810 (15W)**

Dual cone driver includes mounted transformer.

#### ASSEMBLY MODELS

Assembly Model	Driver Model	Transformer 70V / 25V	Transformer Taps	Grille	Backbox (Steel w acoustic lining)	Rear Mounting Holes
<b>DSL810-T72</b>	810	70 / 25	0.25, 0.5, 1, 2, 5W	SG-8 (11.375Sq)	11.3"H x 11.5"W x 5.25"D (top), 3"D (bottom)	4"SQ, 4"Oct, 2-gang, 1-gang
<b>DSQ810-T72</b>	810	70 / 25	0.25, 0.5, 1, 2, 5W	SG-8 (11.375Sq)	11.3"H x 11.5"W x 4"D	Rear hanger bracket

#### DRIVER SPECIFICATIONS (measured half space)

Driver Model	Size	Power Rating	Type	Ceramic Magnet	Frequency Response	Dispersion	Voice Coil Impedance	Voice Coil Diameter	Sensitivity 1W / 1M	Depth	Weight
810	8"	15W RMS	Dual cone	10 oz.	47Hz - 20kHz $\pm 6$ dB	120° @ 2000Hz -6dB	8 Ohms	1"	95dB Avg. 100dB Peak	2.84"	2.0 lbs.



### DSL810-72, DSQ810-72

## 15W Surface Mount Speaker Assemblies (continued)

A  
U  
D  
I  
O

12"/10"  
Speakers &  
Accessories

8"  
Speakers &  
Accessories

6"  
Speakers &  
Accessories

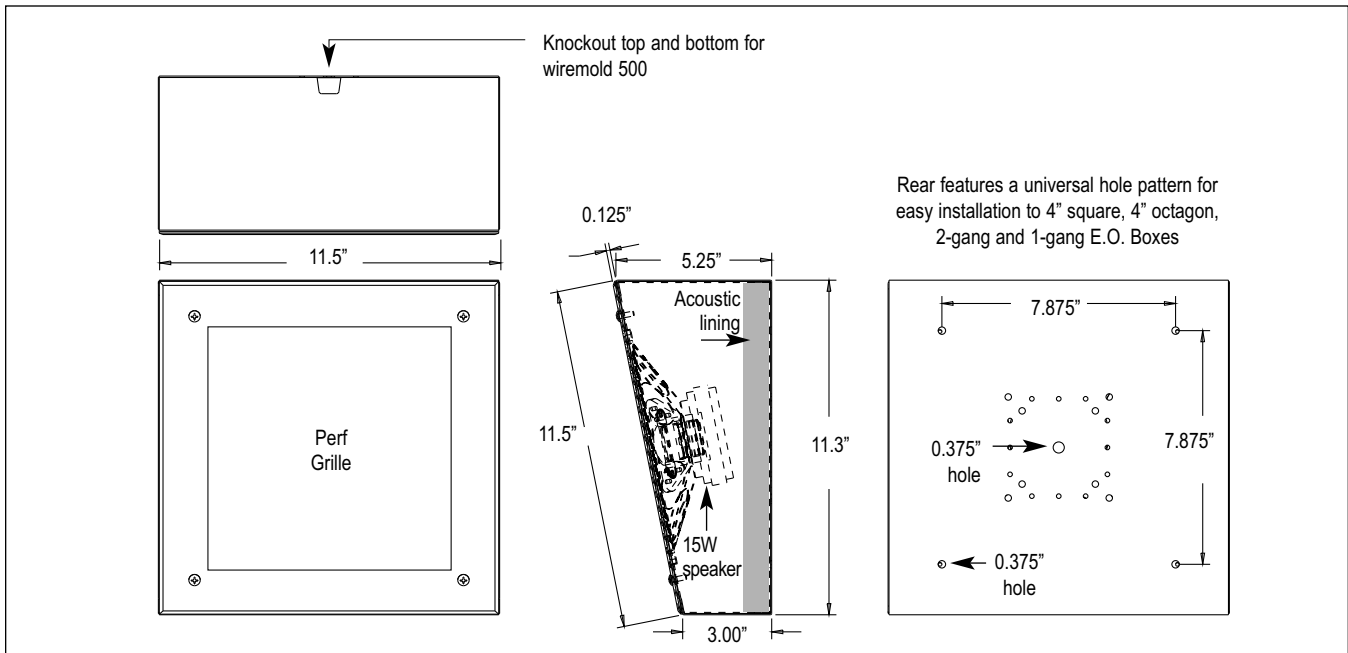
4"  
Speakers &  
Accessories

Horn  
Speakers &  
Accessories

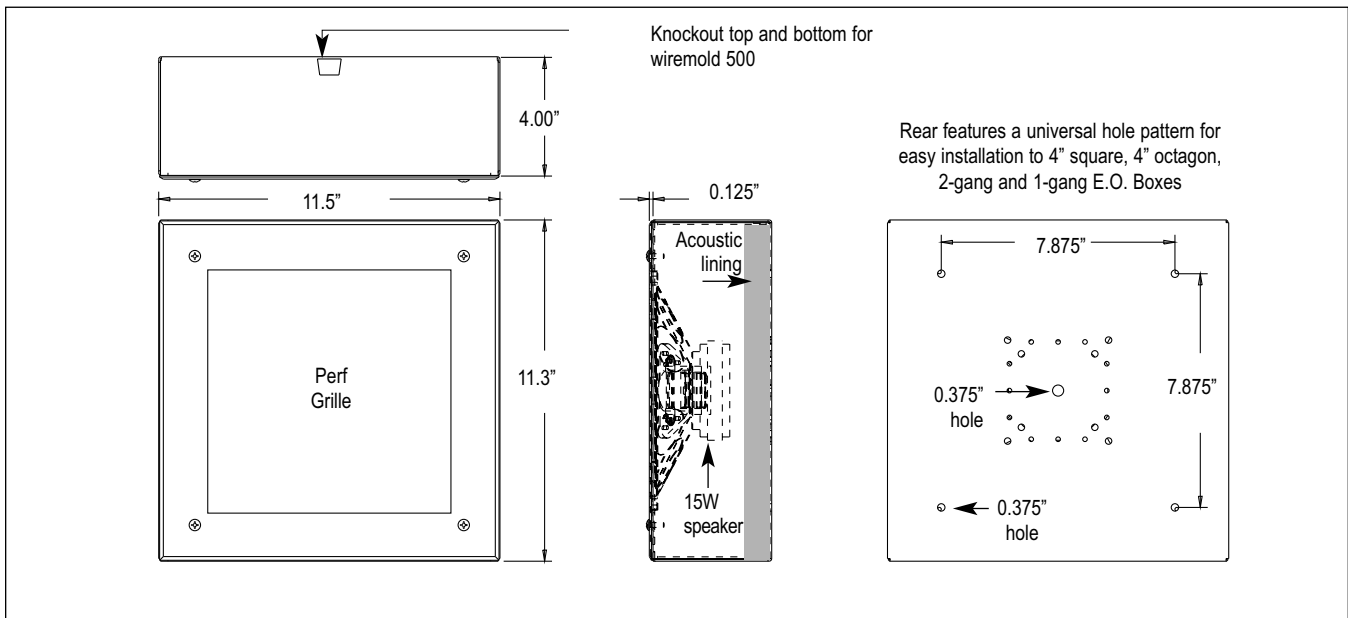
Masking  
Speakers &  
Generators

Control  
Accessories  
& Electronics

Systems



DSL810-72 speaker assembly dimensions



DSQ810-72 speaker assembly dimensions