

CN6A & CN6A-EL Speaker System (6-in. / 40W)

Description

Ready-to-install system with pre-mounted 40W coaxial driver, acoustic backbox and torsion grille offers consultants, facility managers and homeowners high performance audio with cost effective installation and clean cosmetics. System features Lowell's 40W coaxial driver Model 6A40 mounted to the internal flange of the acoustic lined backbox. Speaker terminations exit through a 1/2" Romex clamp for efficient field connection. The metal clamp is part of a unique mounting bracket that supports the optional high performance transformer. The non-load bearing system grille features a fine perforation pattern and installs using depth adjustable torsion springs to achieve a visually hardware-free appearance. Specify CN6A Series with FLAT backbox mounting flange for acoustic tile applications. Select CN6A-EL Series with the same mounting flange plus an EXTENDED lip to provide a leading edge for cut-out openings in sheetrock and plaster applications. The extended lip advances through ceiling materials 0.688". The CN6A and CN6A-EL Series speaker assemblies are unique in that the factory installed driver is attached directly to an inner flange of the backbox. This removes the traditional weight bearing requirements / limitations from the grille, allowing a heavier, higher performance driver to be used with a visually hardware-free torsion grille. These systems combine the acoustic benefits of Lowell's 6A40 driver with the refined appearance of a cosmetically clean grille.

System driver Model 6A40 is part of Lowell's A-Series of speakers. It achieves excellent music and voice reproduction over a large coverage area. The 6.5" driver features a 10oz. magnet coupled with a 1-inch copper voice coil driving a polypropylene cone with half-roll rubber surround for long cone travel and good edge damping. The post-mounted tweeter is a 1-inch balanced drive dome protected by Ferrofluid and a first order high-pass filter. Frequency response is 40Hz-20kHz±6dB with a crossover at 4 kHz. Additionally, the loudspeaker's capacity to deliver a wide angle of sound distribution (150 degrees) over a large area with uniform response and clear audibility ensures complete coverage with minimum units. Optional 70V transformer selection includes 16W and 8W models.

System backbox is 10"D with a 5" radius lined with 1.5" thick acoustic batting for extended low-frequency performance. The backbox volume is 785 cubic inches and the driver is recess-mounted for an operational volume of 687 cubic inches. Steel construction features 1/2" - 3/4" and 1/2" knockouts on the sides and a top mounted cover plate with four seismic anchoring holes for tie-down where required by code. The top cover plate functions as a mounting bracket for the optional factory installed transformer and includes a 1-gang wire access plate with a strain relief metal clamp. Speaker leads exit through the clamp and may be splice-connected and pushed completely inside the backbox for efficient field connection. The backbox is finished in black powder epoxy and includes notches on the mounting flange to align with Lowell's Twist'n Lock™ tile bridge Model LBS8-R1. Tile bridge or support rails are recommended for all applications to transfer the assembly weight (13-15 lbs.) to the ceiling support structure; order tile bridge or rails separately.



System grille Model CN-8M is 12.5" dia. steel with a contoured rim, welded fine-perforated screen, and torsion mounts for a hardware-free appearance. The torsion devices field install and are adjustable for various ceiling depths and materials. The grille is finished in white powder epoxy.

Features

- Systems are ready-to-install with 40W driver and optional transformer mounted into an acoustic backbox with flat mounting lip (CN6A Series) or extended lip (CN6A-EL Series), and clean architectural grille.
- Includes premium 40W coaxial driver with excellent power handling, low distortion, and smooth musical sound.
- Includes 10"D acoustical backbox with flat mounting lip for acoustic tile applications or extended mounting lip for drywall or plaster applications.
- Includes torsion style, low-profile grille for a visually hardware-free and 'upscale' cosmetic appearance.

A & E Specifications

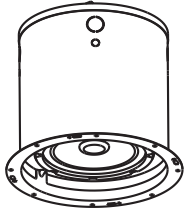
The speaker system for 6.5" distributed speaker applications shall be Lowell CN6A Series 40W Model _____ with flat mounting flange or Lowell CN6A-EL Series 40W Model _____ with extended mounting lip. Each model shall include an acoustic backbox with factory mounted driver, optional transformer and torsion grille. The backbox shall be lined with 1-1/2" thick acoustic lining. The driver shall have a 10oz. magnet with a frequency response of 40Hz - 20kHz±6dB and an average sensitivity of 88dB. Systems for distributed applications shall include a 70V transformer with primary taps at _____ (8, 4, 2, 1W or 16, 8, 4W). Terminations shall be accessible through a top mounted one-gang wire access plate with metal cable clamp. The grille shall be non load-bearing and shall mount to the backbox with no visible hardware using torsion spring devices. For transferring the assembly weight to the ceiling support structure, Lowell tile bridge Model LBS8-R1 or support rail Model SS24 shall be specified.

Model No.	Description	Driver	Transformer	Transformer Taps	Backbox	Grille	System Weight	T-Bridge* (optional)	Rails* (optional)
CN6A-IX10	40W system with FLAT mounting flange	6A40	---	---	IX610	CN-8M	12 lbs.	LBS8-R1	--
CN6AT870-IX10	40W system with FLAT mounting flange	6A40	TLM870	70V: 8, 4, 2, 1W	IX610	CN-8M	13 lbs.	LBS8-R1	--
CN6ATM16-IX10	40W system with FLAT mounting flange	6A40	TLM1670A	70V: 16, 8, 4W	IX610	CN-8M	15 lbs.	LBS8-R1	--
CN6A-IX10-EL	40W system with EXTENDED LIP	6A40	---	---	IX610-EL	CN-8M	12 lbs	--	SS24
CN6AT870-IX10-EL	40W system with EXTENDED LIP	6A40	TLM870	70V: 8, 4, 2, 1W	IX610-EL	CN-8M	13 lbs	--	SS24
CN6ATM16-IX10-EL	40W system with EXTENDED LIP	6A40	TLM1670A	70V: 16, 8, 4W	IX610-EL	CN-8M	15 lbs	--	SS24

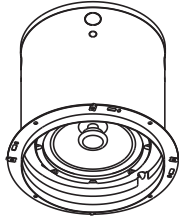
*Tile bridge or rails are recommended to transfer the system weight to the ceiling support structure. Order Model LBS8-R1 or SS24 separately.

DRIVER SPECIFICATIONS (measured half space)

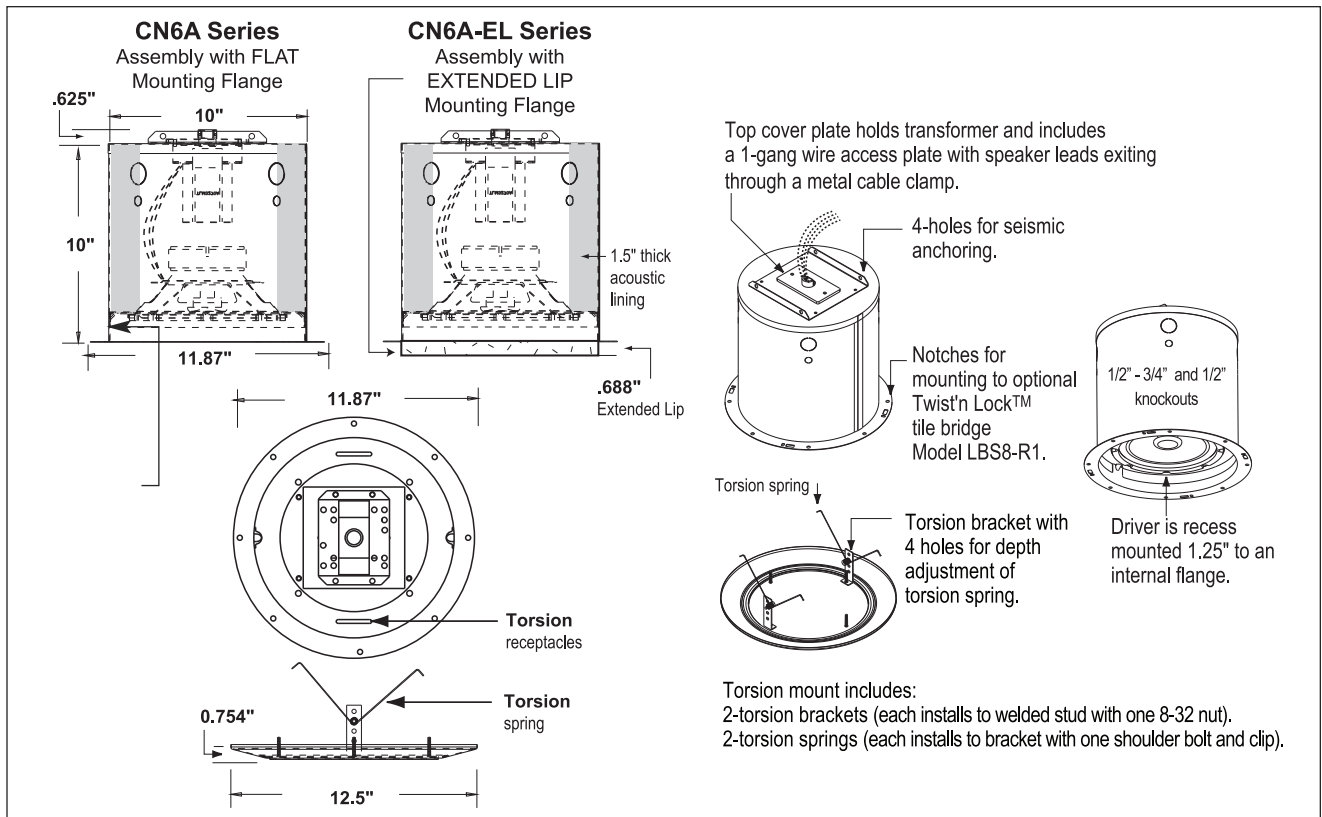
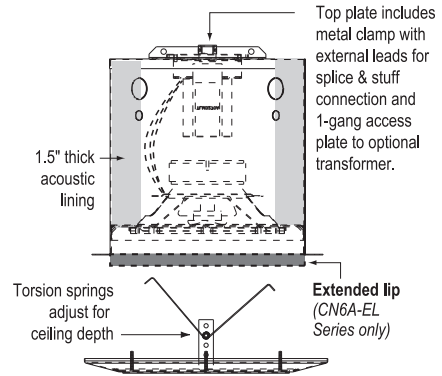
Driver Model	Size	Power Rating	Type	Ceramic Magnet	Frequency Response	Dispersion	Voice Coil Impedance	Voice Coil Diameter	Sensitivity 1W / 1M	Depth (w/o xfmr)	Weight (w/o xfmr)
6A40	6.5"	40W	Coaxial	10 oz. LF 2 oz. HF	40Hz - 20kHz±6dB	150° @ 2000Hz -6dB	8 Ohms	1" LF 0.53" HF	88dB Avg. 91dB Peak	3.0"	2.1 lbs



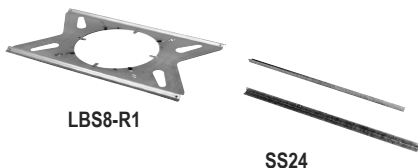
CN6A Series
Assembly with FLAT
Mounting Flange



CN6A-EL Series
Assembly with
EXTENDED LIP



Companion Accessories for CN6A and CN6A-EL Series (recommended for all ceiling applications)



Tile Bridge and Support Rails (order separately)

Model	Size	Features
LBS8-R1	23.75"L	Tile bridge with screw or Twist n' Lock mounting to CN6A Series
SS24	23.75"L	Channel rail pair - galvanized steel with 8-18 hardware for mounting CN6A-EL Series