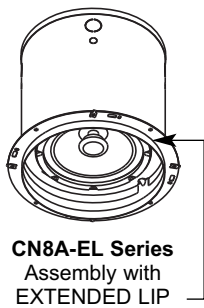
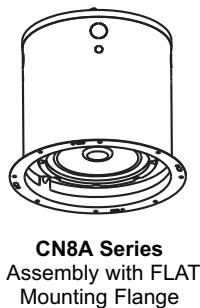
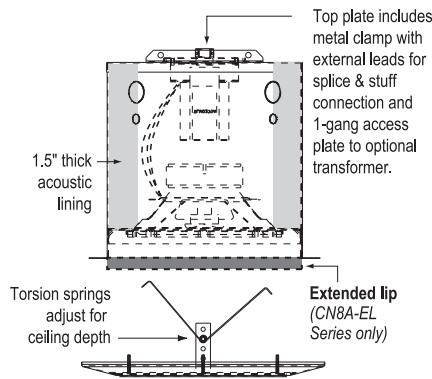




**CN8A Series and CN8A-EL Series**



### Quality Features

- Systems are ready-to-install with 50W driver and optional transformer mounted into an acoustic backbox with flat mounting lip (CN8A Series) or extended lip (CN8A-EL Series), and clean architectural grille.
- Includes premium 50W coaxial driver with excellent power handling, low distortion, and smooth musical sound.
- Includes 10"D acoustical backbox with flat mounting lip for acoustic tile applications or extended mounting lip for drywall or plaster applications.
- Includes torsion style, low-profile grille for a visually hardware-free and 'upscale' cosmetic appearance.

### Description

Ready-to-install systems with pre-mounted 50W coaxial driver, acoustic backbox and torsion grille offer consultants, facility managers and homeowners high performance audio with cost effective installation and clean cosmetics. Systems feature Lowell's 50W coaxial driver Model 8A50 mounted to the internal flange of the acoustic lined backbox. Speaker terminations exit through a 1/2" Romex clamp for efficient field connection. The metal clamp is part of a unique mounting bracket that supports the optional high performance transformer. The non-load bearing system grille features a fine perforation pattern and installs using depth adjustable torsion springs to achieve a visually hardware-free appearance.

Specify CN8A Series with FLAT backbox mounting flange for acoustic tile applications. Select CN8A-EL Series with the same mounting flange plus an EXTENDED lip to provide a leading edge for cut-out openings in sheetrock and plaster applications. The extended lip advances through ceiling materials 0.688".

**Unique design:** The CN8A and CN8A-EL Series speaker assemblies are special in that the factory installed driver is attached directly to an inner flange of the backbox. This removes the traditional weight bearing requirements / limitations from the grille, allowing a heavier, higher performance driver to be used with a visually hardware-free torsion grille. These desirable systems combine the acoustic benefits of Lowell's 8A50 driver with the refined appearance of a cosmetically clean grille.

**System driver** Model 8A50 is the flagship of Lowell's A-Series of speakers. The 50W 8-ohm driver exhibits greater power handling, lower distortion, and smoother more musical sound than many commercial coaxial drivers. It features a large, 20oz magnet coupled with a 1.4-inch copper voice coil driving a polypropylene cone with half-roll rubber surround for long cone travel and good edge damping. The post-mounted tweeter is a 1-inch balanced drive dome protected by Ferrofluid

### SYSTEM MODELS

| System Model            | Description                          | Includes Driver | Includes Transformer | Transformer Taps | Includes Backbox | Includes Grille | System Weight | T-Bridge* (optional) | Rails* (optional) |
|-------------------------|--------------------------------------|-----------------|----------------------|------------------|------------------|-----------------|---------------|----------------------|-------------------|
| <b>CN8A-IX10</b>        | 50W system with FLAT mounting flange | 8A50            | ---                  | ---              | IX810            | CN-8M           | 14 lbs.       | LBS8-R1              | --                |
| <b>CN8AT870-IX10</b>    | 50W system with FLAT mounting flange | 8A50            | TLM870               | 70V: 8, 4, 2, 1W | IX810            | CN-8M           | 15 lbs.       | LBS8-R1              | --                |
| <b>CN8ATM16-IX10</b>    | 50W system with FLAT mounting flange | 8A50            | TLM1670A             | 70V: 16, 8, 4W   | IX810            | CN-8M           | 16 lbs.       | LBS8-R1              | --                |
| <b>CN8ATM32-IX10</b>    | 50W system with FLAT mounting flange | 8A50            | TLM3270A             | 70V: 32, 16, 8W  | IX810            | CN-8M           | 17 lbs.       | LBS8-R1              | --                |
| <b>CN8A-IX10-EL</b>     | 50W system with EXTENDED LIP         | 8A50            | ---                  | ---              | IX810-EL         | CN-8M           | 14 lbs        | --                   | SS24              |
| <b>CN8AT870-IX10-EL</b> | 50W system with EXTENDED LIP         | 8A50            | TLM870               | 70V: 8, 4, 2, 1W | IX810-EL         | CN-8M           | 15 lbs        | --                   | SS24              |
| <b>CN8ATM16-IX10-EL</b> | 50W system with EXTENDED LIP         | 8A50            | TLM1670A             | 70V: 16, 8, 4W   | IX810-EL         | CN-8M           | 16 lbs        | --                   | SS24              |
| <b>CN8ATM32-IX10-EL</b> | 50W system with EXTENDED LIP         | 8A50            | TLM3270A             | 70V: 32, 16, 8W  | IX810-EL         | CN-8M           | 17 lbs        | --                   | SS24              |

\*Tile bridge or rails are recommended to transfer the system weight to the ceiling support structure. Order Model LBS8-R1 or SS24 separately.

### DRIVER SPECIFICATIONS (measured half space)

| Driver Model | Size | Power Rating | Type    | Ceramic Magnet        | Frequency Response                       | Dispersion            | Voice Coil Impedance | Voice Coil Diameter | Sensitivity 1W / 1M    | Depth (w/o xfmr) | Weight (w/o xfmr) |
|--------------|------|--------------|---------|-----------------------|--|-----------------------|----------------------|---------------------|------------------------|------------------|-------------------|
| 8A50         | 8"   | 50W          | Coaxial | 20 oz. LF<br>2 oz. HF | 40Hz - 20kHz±6dB<br>40Hz - 20kHz Nominal | 110° @<br>2000Hz -6dB | 8 Ohms               | 1.4" LF<br>0.53" HF | 90dB Avg.<br>95dB Peak | 3.85"            | 3.5 lbs           |



## CN8A and CN8A-EL Series

### 8" Speaker Systems with 50W driver, 10"D backbox, torsion grille

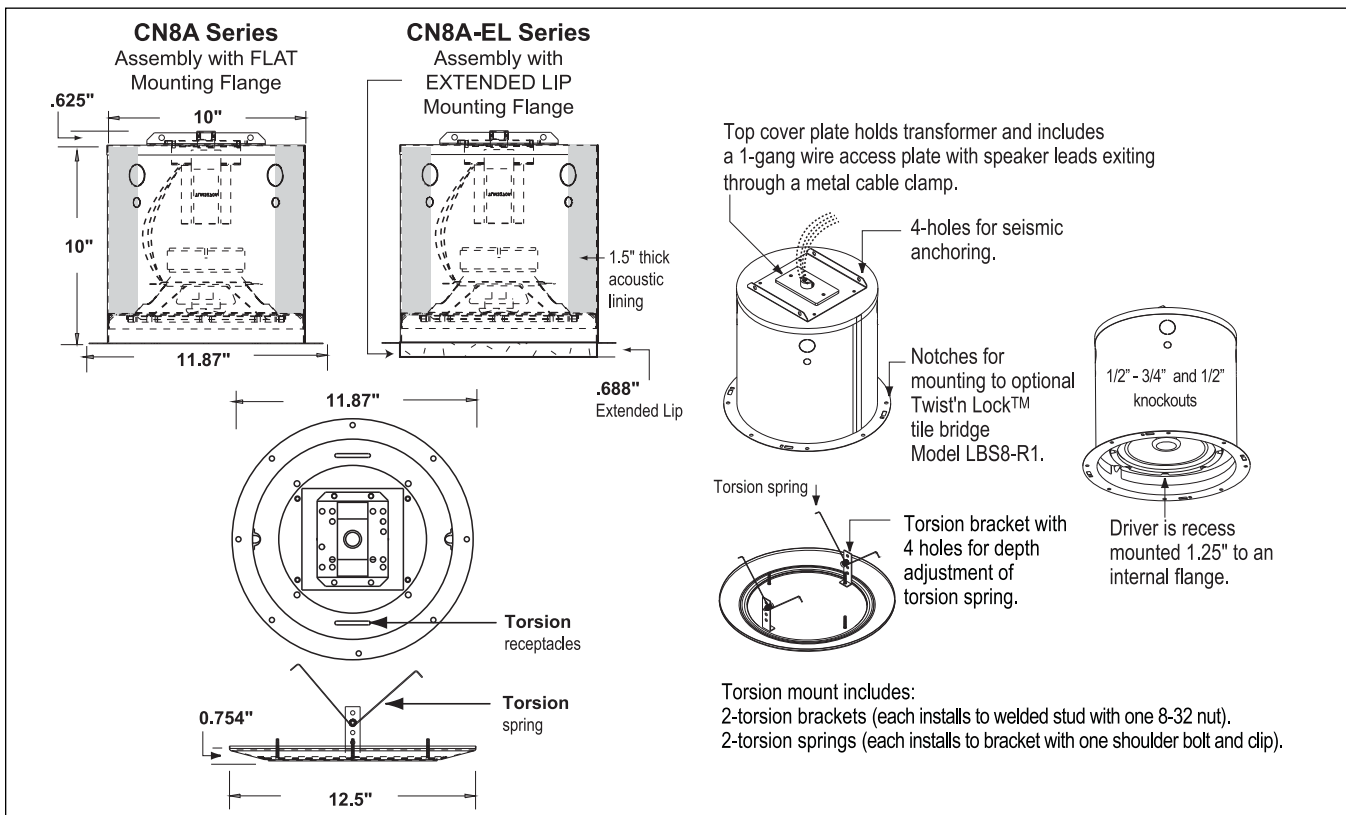
and a first order high pass filter. Frequency response is 40Hz-20kHz±6dB with a crossover at 4 kHz. Additionally, the loud-speaker's capacity to deliver a wide angle of sound distribution (110 degrees) over a large area with uniform response and voice clarity ensures complete coverage with minimum units. Optional 70V transformer selection includes 32W, 16W, and 8W models.

**System backboxes** are 10"D with a 5" radius lined with 1.5" thick acoustic batting for extended low-frequency performance. The backbox volume is 785 cubic inches and the driver is recess-mounted for an operational volume of 687 cubic inches. Steel construction features 1/2" - 3/4" and 1/2" knockouts on the sides and a top mounted cover plate with four seismic anchoring holes for tie-down where required by code. The top cover plate functions as a mounting bracket for the optional factory installed transformer and includes a 1-gang wire access plate with a strain relief metal clamp. Speaker leads exit through the clamp and may be splice-connected and pushed completely inside the backbox for efficient field connection. The backbox is finished in black powder epoxy and includes notches on the mounting flange to align with Lowell's Twist'n Lock™ tile bridge Model LBS8-R1. Tile bridge or support rails are recommended for all applications to transfer the assembly weight (14-17 lbs.) to the ceiling support structure; order tile bridge or rails separately.

**System grille** Model CN-8M is 12.5" dia. steel with a contoured rim, welded fine-perforated screen, and torsion mounts for a hardware-free appearance. The torsion devices field install and are adjustable for various ceiling depths and materials. The grille is finished in white powder epoxy.

### A & E Specifications

The speaker system for 8" distributed speaker applications shall be Lowell CN8A Series 50W Model \_\_\_\_\_ with flat mounting flange or Lowell CN8A-EL Series 50W Model \_\_\_\_\_ with extended mounting lip. Each model shall include an acoustic backbox with factory mounted driver, optional transformer and torsion grille. The backbox shall be lined with 1-1/2" thick acoustic lining. The driver shall be 50W 8-inch coaxial driver Model 8A50 and shall have a 20oz. magnet with a frequency response of 40Hz - 20kHz±6dB and an average sensitivity of 90dB. Systems for distributed applications shall include a 70V transformer with primary taps at \_\_\_\_\_ (8, 4, 2, 1W or 16, 8, 4W or 32, 16, 8W). Terminations shall be accessible through a top mounted one-gang wire access plate with metal cable clamp. The grille shall be non load-bearing and shall mount to the backbox with no visible hardware using torsion spring devices. For transferring the assembly weight to the ceiling support structure, Lowell tile bridge Model LBS8-R1 or support rail Model SS24 shall be specified.



Top cover plate holds transformer and includes a 1-gang wire access plate with speaker leads exiting through a metal cable clamp.

4-holes for seismic anchoring.

Notches for mounting to optional Twist'n Lock™ tile bridge Model LBS8-R1.

1/2" - 3/4" and 1/2" knockouts

Driver is recess mounted 1.25" to an internal flange.

Torsion spring

Torsion bracket with 4 holes for depth adjustment of torsion spring.

Torsion mount includes:

2-torsion brackets (each installs to welded stud with one 8-32 nut).  
2-torsion springs (each installs to bracket with one shoulder bolt and clip).

### Companion Accessories for CN8A and CN8A-EL Series (recommended for all ceiling applications)



#### Tile Bridge and Support Rail Details (order separately)

| Model   | Size    | Features  |
|---------|---------|---|
| LBS8-R1 | 23.75"L | Tile bridge with screw or Twist n' Lock mounting to CN8A Series                     |
| SS24    | 23.75"L | Channel rail pair - galvanized steel with 8-18 hardware for mounting CN8A-EL Series |